

PORTFOLIO



Lighting Design Process

Stage 1; Gathering Sufficient and Necessary Information

Stage 2; Concept Design

Stage 3; Schematic Design

Stage 4; Design Development

Stage 5; Formation of Tender Documents and Specifications

Stage 6; Purchasing Consultancy (Optional)

Stage 7; Site Consulting (Optional)

Gathering Sufficient and Necessary Information

At this stage, the wishes and needs of the architect and the investor for the project, as well as the structure, function and location of the project, the planned lighting budget, user requirements are analyzed in the best way. In addition to information exchange, all arguments (projects, visuals, material information to be used, etc.) are provided to move on to other stages.

Concept Design

The concept file first explains what kind of design is considered and the targeted results with this design. At this stage, architectural thoughts and wishes are transformed into a lighting solution. Concept Design about sketches, application examples, photographs and type fields It helps to generate ideas about the project with Dialux visuals. The project is developed through this phase.

Schematic Design

The concept file first explains what kind of design is considered and the targeted results with this design. At this stage, architectural thoughts and wishes are transformed into a lighting solution. Concept Design about sketches, application examples, photographs and type fields It helps to generate ideas about the project with Dialux visuals. The project is developed through this phase.

Design Development

At this stage, where the details of the design are prepared, where the selected armatures will be positioned in the appearance and sections, the armatures to be used,

Technical specifications, lamp types and colours, and accessories for use in the armatures are specified in full detail. According to the details, the necessary support is provided as reporting for the automation company to prepare the lighting control projects.

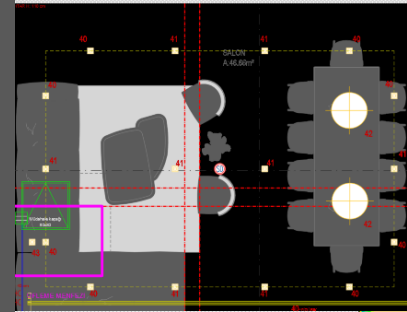
Formation of Tender Documents and Specifications

Following the final decisions, the fixture specifications for the tender are prepared. These documents will be like a technical specification, containing details such as the description of the luminaire, model, visual, lamp power and colour, installation details, and emergency kit use if there are accessories. The armature inventory list and brand list are prepared at this stage.

Lighting concept sample

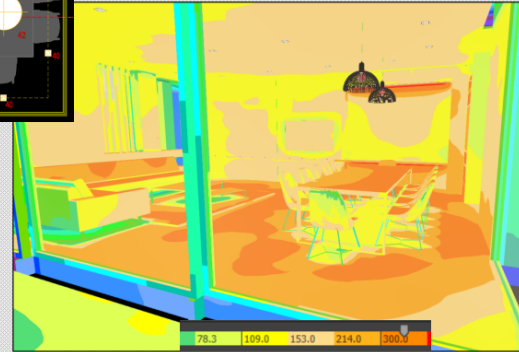


8 No' lu villa tip villa kabul edilmiş olup alınacak kararlar tüm proje genelinde uygulanacaktır. Cephe ve peyzaj aydınlatma konsepti hazırlanırken ve tüm proje genelinde mimari seçimler göz önünde bulundurulmuş ve bu seçimlere paralel bir çalışma yürütülmesi amaçlanmıştır. Armatür konumlarına sadık kalınarak doğru ürünlerin ve teknik verilerin seçimine odaklanılmıştır.



Kare içerisine alınan iki armatürden biri (40) genel aydınlatma için diğeri (43) ise duvardaki tabloyu aydınlatma için kullanılmıştır. 40 numaralı armatür iptal edilip 43 iptal edilen ürün yerine alınmalıdır. Böylelikle tavandaki kalabalık görüntü azalacaktır.

Mevcut yerleşime göre hesap sonucu



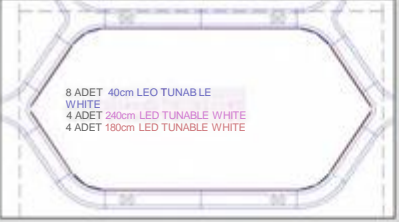

Formation of Tender Documents and Specifications sample

HX03



~r~n Tanımı: LED Lineer Formlu Armat~r

Lamba Tipi: LED Armat~r (kis Lumeni: 570lm/m)

Lamba Gi.ici.i: IOW/m Isik Rengi: Akkh Beyaz Adet:

Yukarıda bir adet içerisinde kullanılacak lineer LED armat~r yerleşim ve adetleri g~r~lmektedir. Toplam hexagon sayıst yaklaşık olarak 147 olacaktır.

HX03

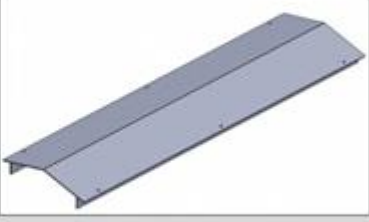

~r~n Tanım: Kapak











Lamba Tipi: Armat~r (krs Lumeni:)

Lamba Gi.ici.i: Isik Rengi: Adet:

Teknik Özellikler: Hexagon i-erine konumlandırılacak LED armat~rlerin ~zerinde opal (yaklaşık %50-60 \$k ge~irgenliğine sahip) kapak kullanılacaktır. Kapaklar armat~r tedarik~isi tarafından temin edilecek olup, ~r~n~n tasarmmi, izolasyon ~z~mleri, dizayn ve mimari grup ile aydınlatma danismaninin estetik kaygılar (~ok fazla vida kullanılmamast vb.) dikkate alınarak ~retilecektir. Temin edilecek numune ilgili disiplinler tarafından incelenecek ve mock up ger~eklestirilecektir. Onay g~rmeyen imalatlar tedarik~i tarafından d~zeltilip tekrar onaya sunulacaktır.

Onay g~ren ~r~n montajr ve t~m s~perviz~rl~k hizmetleri tedarik~i tarafından verilecektir.

Proje Kodu	Armatör Modeli Lineer, Spot, Güb, Armatör	Adet	Avrışık	Avrışık	Emfı	Emfı	İKİLER
							
	5000k		5700lm Lineer 350V/m		3500lm Lineer 350V/m		
			143.00 €		138.00 €		128.00 €
							
	5000 lumen 370mm lineer spotr (P&S, 5000K, 14, 4x370mm)						85.00 €
							
	5000 lumen				5000 lumen	85.00 €	85.00 €

REFERENCES

BUKHARA WYNDHAM HOTEL / GENERAL LIGHTING CONCEPT DESIGN

BUKHARA RAMADA HOTEL / GENERAL LIGHTING CONCEPT DESIGN

AZERSU TOWER BAKU – AZMEP GROUP / MANAGEMENT OFFICES GENERAL LIGHTING CONCEPT AND APPLICATION DESIGN

TASHKENT TRIP HOTEL / GENERAL LIGHTING CONCEPT DESIGN

ID BODRUM VILLAS – OZTEK INSAAT / GENERAL LIGHTING CONCEPT DESIGN AND APPLICATION PROJECT, SPECIAL PRODUCT DESIGN

LOUISE VUITTON BODRUM -/ GENERAL LIGHTING AND AUTOMATION CONCEPT APPLICATION CONSULTANCY

DAMMAM SHERATON / ALL GUEST ROOM RENOVATION CONCEPT DESIGNS

TPAO HEADQUARTERS / ATRIUM DECORATIVE PENDANT LIGHTING DESIGN

DEMIRCIKOY VILLAS PROJECT / GENERAL LIGHTING CONCEPT AND PROJECT

GOKCEBEL BODRUM PRIVATE HOUSES PROJECT / LANDSCAPE LIGHTING CONCEPT

KUZGUNCUK PRIVATE HOUSE / GENERAL LIGHTING CONCEPT AND PROJECT

LA PIOLA ITALYAN RESTAURANT PASTA&PIZZA / WIMBLEDON

GIOTTO ITALY RESTAURANT / TASHKENT

AND MORE IS COMING...

BUKHARA WYNDHAM HOTEL / GENERAL LIGHTING CONCEPT DESIGN

LEO HOSPITALITY



BUKHARA WYNDHAM
Bukhara - Uzbekistan

FL.02 - LOBBY LOBBY LOUNGE LOBBY BAR

L02.033
+5.00



THESE DRAWINGS, ALL IDEAS, CONCEPTS, DESIGN, DETAILS AND SPECIFICATIONS INDICATED HEREON ARE THE PROPERTY OF LEO CONSULTANCY AND SHALL NOT BE REPRODUCED OR USED BY ANY OTHER PERSON OR ENTITY WITHOUT THE WRITTEN PERMISSION FROM LEO CONSULTANCY. VISUAL CONCEPT WITH THESE DRAWINGS SHALL BE SUBJECT TO THE CLIENT'S APPROVAL AND ACCEPTANCE OF THESE RESTRICTIONS.

CLIENT ; WIDE TENT SYSTEM LLC
PROJECT MANAGEMENT ; LEO HOSPITALITY SOLUTIONS LLC
CONTRACTOR ; DISCOVER INVEST
ARCHITECT ; YIGIT EMRE ZEREN



BUKHARA WYNDHAM
Bukhara - Uzbekistan

FL.02 - LOBBY LOBBY LOUNGE LOBBY BAR

L02.033
+5.00



THESE DRAWINGS, ALL IDEAS, CONCEPTS, DESIGN, DETAILS AND SPECIFICATIONS INDICATED HEREON ARE THE PROPERTY OF LEO CONSULTANCY AND SHALL NOT BE REPRODUCED OR USED BY ANY OTHER PERSON OR ENTITY WITHOUT THE WRITTEN PERMISSION FROM LEO CONSULTANCY. VISUAL CONCEPT WITH THESE DRAWINGS SHALL BE SUBJECT TO THE CLIENT'S APPROVAL AND ACCEPTANCE OF THESE RESTRICTIONS.

CLIENT ; WIDE TENT SYSTEM LLC
PROJECT MANAGEMENT ; LEO HOSPITALITY SOLUTIONS LLC
CONTRACTOR ; DISCOVER INVEST
ARCHITECT ; YIGIT EMRE ZEREN



BUKHARA WYNDHAM
Bukhara - Uzbekistan

FL.02 - LOBBY RECEPTION

L02.034
+5.00



THESE DRAWINGS, ALL IDEAS, CONCEPTS, DESIGN, DETAILS AND SPECIFICATIONS INDICATED HEREON ARE THE PROPERTY OF LEO CONSULTANCY AND SHALL NOT BE REPRODUCED OR USED BY ANY OTHER PERSON OR ENTITY WITHOUT THE WRITTEN PERMISSION FROM LEO CONSULTANCY. VISUAL CONCEPT WITH THESE DRAWINGS SHALL BE SUBJECT TO THE CLIENT'S APPROVAL AND ACCEPTANCE OF THESE RESTRICTIONS.

CLIENT ; WIDE TENT SYSTEM LLC
PROJECT MANAGEMENT ; LEO HOSPITALITY SOLUTIONS LLC
CONTRACTOR ; DISCOVER INVEST
ARCHITECT ; YIGIT EMRE ZEREN



BUKHARA WYNDHAM
Bukhara - Uzbekistan

FL.02 - LOBBY ELEVATOR HALL

L02.037
+5.00



THESE DRAWINGS, ALL IDEAS, CONCEPTS, DESIGN, DETAILS AND SPECIFICATIONS INDICATED HEREON ARE THE PROPERTY OF LEO CONSULTANCY AND SHALL NOT BE REPRODUCED OR USED BY ANY OTHER PERSON OR ENTITY WITHOUT THE WRITTEN PERMISSION FROM LEO CONSULTANCY. VISUAL CONCEPT WITH THESE DRAWINGS SHALL BE SUBJECT TO THE CLIENT'S APPROVAL AND ACCEPTANCE OF THESE RESTRICTIONS.

CLIENT ; WIDE TENT SYSTEM LLC
PROJECT MANAGEMENT ; LEO HOSPITALITY SOLUTIONS LLC
CONTRACTOR ; DISCOVER INVEST
ARCHITECT ; YIGIT EMRE ZEREN



BUKHARA WYNDHAM HOTEL / GENERAL LIGHTING CONCEPT DESIGN

LEO HOSPITALITY



BUKHARA WYNDHAM
Bukhara - Uzbekistan

FL.02 - A LA CARTE RESTAURANT

L02.049
+5.00



THESE DRAWINGS, ALL IDEAS, CONCEPTS, DETAILS, MATERIALS AND SPECIFICATIONS DESCRIBED HEREIN ARE THE PROPERTY OF LEO CONSULTANCY AND SHALL NOT BE REPRODUCED OR COPIED BY THE CLIENT OR ANY OTHER PERSON WITHOUT THE WRITTEN PERMISSION FROM LEO CONSULTANCY. VISUAL CONCEPTS WITH THESE DRAWINGS SHALL BE SUBJECT TO THE CLIENT'S APPROVAL AND ACCEPTANCE. VISUAL CONCEPTS SHALL BE SUBJECT TO THE CLIENT'S APPROVAL AND ACCEPTANCE.

**CLIENT ; WIDE TENT SYSTEM LLC
PROJECT MANAGEMENT ; LEO HOSPITALITY SOLUTIONS LLC
CONTRACTOR ; DISCOVER INVEST
ARCHITECT ; YIGIT EMRE ZEREN**



BUKHARA WYNDHAM
Bukhara - Uzbekistan

FL.02 - A LA CARTE RESTAURANT

L02.049
+5.00



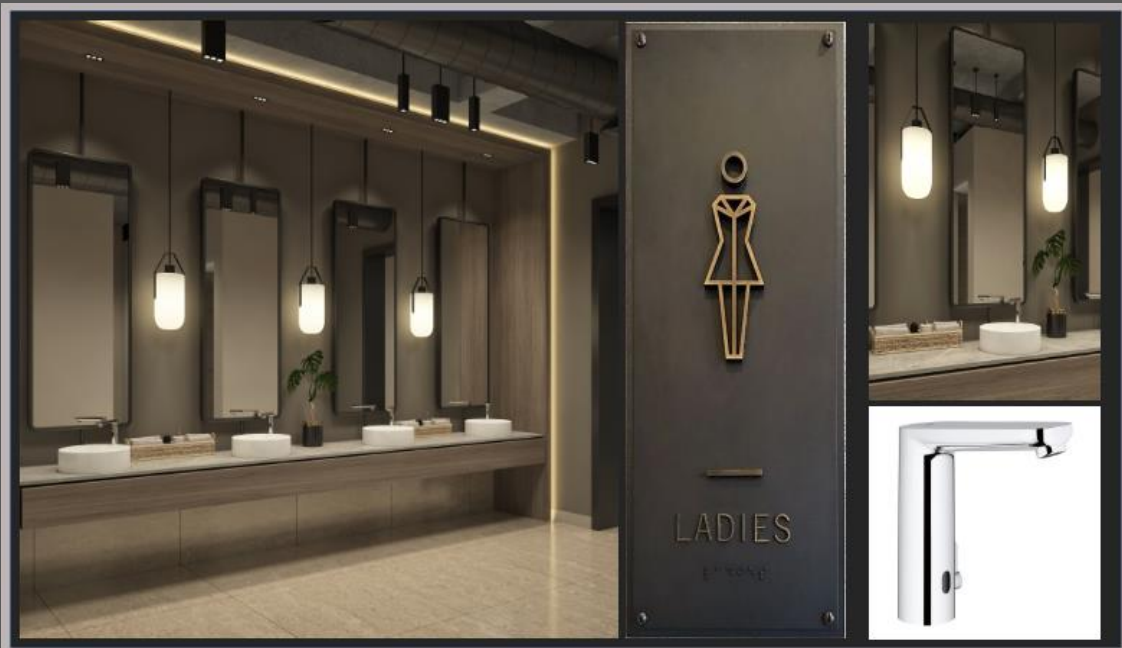
THESE DRAWINGS, ALL IDEAS, CONCEPTS, DETAILS, MATERIALS AND SPECIFICATIONS DESCRIBED HEREIN ARE THE PROPERTY OF LEO CONSULTANCY AND SHALL NOT BE REPRODUCED OR COPIED BY THE CLIENT OR ANY OTHER PERSON WITHOUT THE WRITTEN PERMISSION FROM LEO CONSULTANCY. VISUAL CONCEPTS WITH THESE DRAWINGS SHALL BE SUBJECT TO THE CLIENT'S APPROVAL AND ACCEPTANCE. VISUAL CONCEPTS SHALL BE SUBJECT TO THE CLIENT'S APPROVAL AND ACCEPTANCE.

**CLIENT ; WIDE TENT SYSTEM LLC
PROJECT MANAGEMENT ; LEO HOSPITALITY SOLUTIONS LLC
CONTRACTOR ; DISCOVER INVEST
ARCHITECT ; YIGIT EMRE ZEREN**



BUKHARA WYNDHAM HOTEL / GENERAL LIGHTING CONCEPT DESIGN

LEO HOSPITALITY



BUKHARA WYNDHAM
Bukhara - Uzbekistan

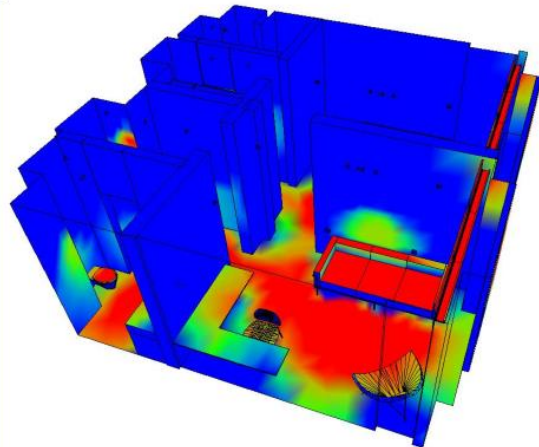
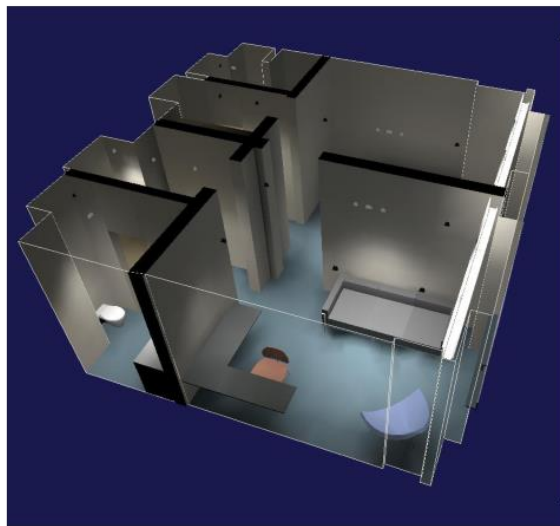
FL.02 - SPA WELLNESS FEMALE LOCKERS

L02.012 L02.015 +5.00



THESE DRAWINGS, ALL IDEAS, CONCEPTS, DESIGNS, DETAILS AND SPECIFICATIONS INDICATED HEREON ARE THE PROPERTY OF LEO CONSULTING AND SHALL NOT BE REPRODUCED OR OTHERWISE BY THE CLIENT OR ANY OTHER PERSON WITHOUT THE WRITTEN PERMISSION FROM LEO CONSULTING. CONTACT WITH THESE DRAWINGS, IDEAS, CONCEPTS, DESIGNS, DETAILS AND SPECIFICATIONS SHALL CONSTITUTE AN AUTOMATIC VIOLATION OF ACCEPTANCE OF THESE RESTRICTIONS.

**CLIENT ; WIDE TENT SYSTEM LLC
PROJECT MANAGEMENT ; LEO HOSPITALITY SOLUTIONS LLC
CONTRACTOR ; DISCOVER INVEST
ARCHITECT ; YIGIT EMRE ZEREN**



BUKHARA WYNDHAM
Bukhara - Uzbekistan

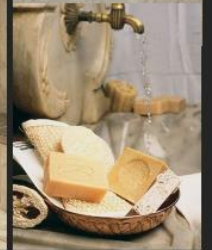
FL.03 - PUBLIC WC MALE/FEMALE

L03.039 L03.040 +8.90



THESE DRAWINGS, ALL IDEAS, CONCEPTS, DESIGNS, DETAILS AND SPECIFICATIONS INDICATED HEREON ARE THE PROPERTY OF LEO CONSULTING AND SHALL NOT BE REPRODUCED OR OTHERWISE BY THE CLIENT OR ANY OTHER PERSON WITHOUT THE WRITTEN PERMISSION FROM LEO CONSULTING. CONTACT WITH THESE DRAWINGS, IDEAS, CONCEPTS, DESIGNS, DETAILS AND SPECIFICATIONS SHALL CONSTITUTE AN AUTOMATIC VIOLATION OF ACCEPTANCE OF THESE RESTRICTIONS.

**CLIENT ; WIDE TENT SYSTEM LLC
PROJECT MANAGEMENT ; LEO HOSPITALITY SOLUTIONS LLC
CONTRACTOR ; DISCOVER INVEST
ARCHITECT ; YIGIT EMRE ZEREN**



BUKHARA WYNDHAM
Bukhara - Uzbekistan

FL.02 - SPA WELLNESS LOUNGE

L02.028 L02.029 +5.00



THESE DRAWINGS, ALL IDEAS, CONCEPTS, DESIGNS, DETAILS AND SPECIFICATIONS INDICATED HEREON ARE THE PROPERTY OF LEO CONSULTING AND SHALL NOT BE REPRODUCED OR OTHERWISE BY THE CLIENT OR ANY OTHER PERSON WITHOUT THE WRITTEN PERMISSION FROM LEO CONSULTING. CONTACT WITH THESE DRAWINGS, IDEAS, CONCEPTS, DESIGNS, DETAILS AND SPECIFICATIONS SHALL CONSTITUTE AN AUTOMATIC VIOLATION OF ACCEPTANCE OF THESE RESTRICTIONS.

**CLIENT ; WIDE TENT SYSTEM LLC
PROJECT MANAGEMENT ; LEO HOSPITALITY SOLUTIONS LLC
CONTRACTOR ; DISCOVER INVEST
ARCHITECT ; YIGIT EMRE ZEREN**

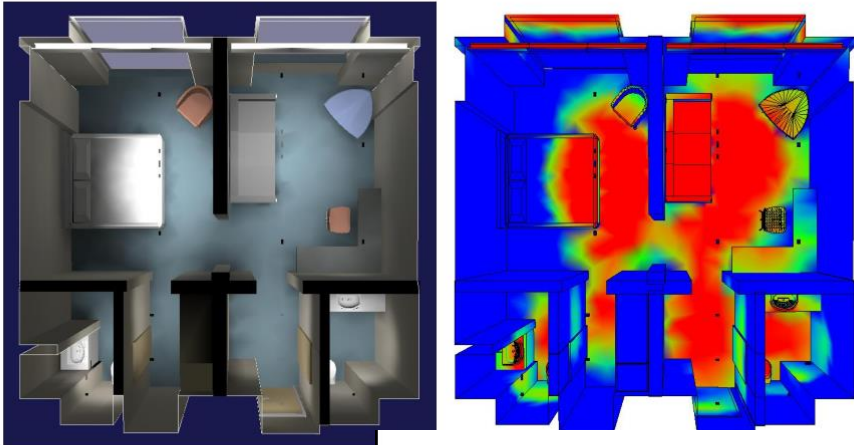


BUKHARA WYNDHAM HOTEL / GENERAL LIGHTING CONCEPT DESIGN

LEO HOSPITALITY

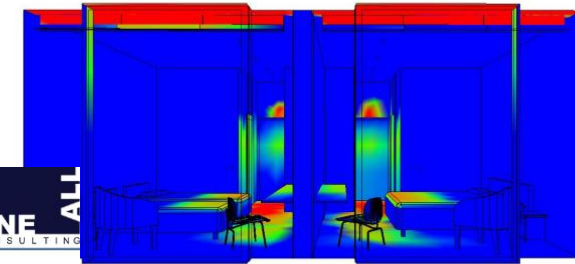
TYPE 5 ROOM

T5 - EXECUTIVE SENIOR



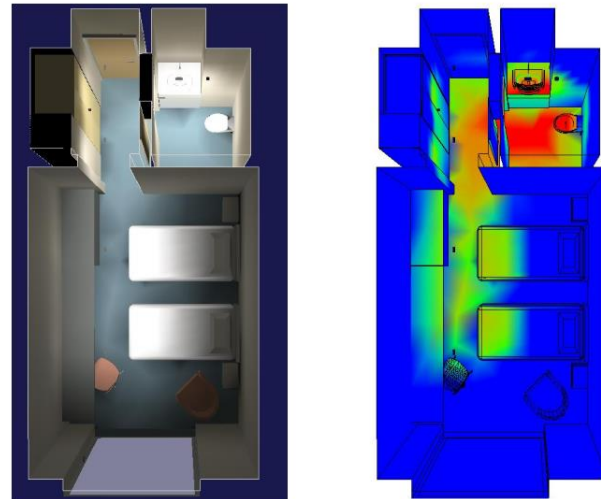
TYPE 3 ROOM

T3 - CONNECT ROOM



TYPE 1 ROOM

T1 - TWIN SIZE ROOM



BUKHARA RAMADA HOTEL / GENERAL LIGHTING CONCEPT DESIGN

LEO HOSPITALITY



FINE ALL
CONSULTING

www.fine-all.com
t.kurall@fine-all.com
+44 773 035 24 76
+90 530 484 30 60

16 SABBERTON CLOSE, REDBOURNE,
ST. ALBANS, ENGLAND, AL3 7DS

PROJECT NAME: RAMADA HOTEL
DRAWING NAME: FACADE LIGHTING PLAN
DATE: 18/05/2020

AZERSU TOWER BAKU / MANAGEMENT OFFICES GENERAL
LIGHTING CONCEPT AND APPLICATION DESIGN
AZMEP GROUP



TASHKENT TRIP HOTEL / GENERAL LIGHTING CONCEPT DESIGN
LEO HOSPITALITY



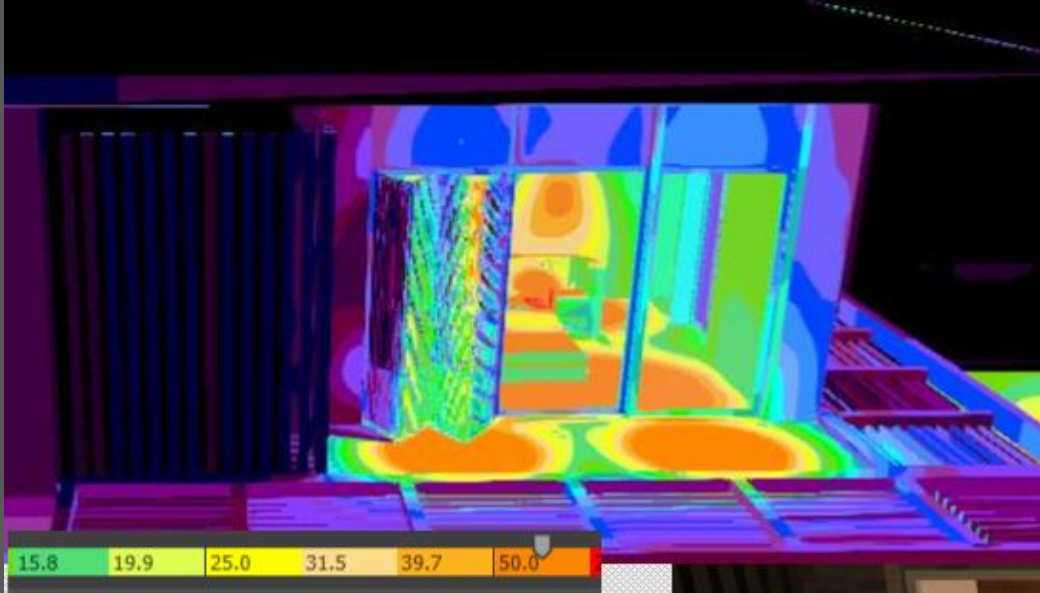
Tashkent Hotel Proposal – Renders
TASHKENT / UZBEKISTAN



ID BODRUM VILLAS / GENERAL LIGHTING CONCEPT DESIGN AND APPLICATION
PROJECT, SPECIAL PRODUCT DESIGN
OZTEK CONSTRUCTION



ID BODRUM VILLAS / GENERAL LIGHTING CONCEPT DESIGN AND APPLICATION
PROJECT, SPECIAL PRODUCT DESIGN
OZTEK CONSTRUCTION



ID BODRUM VILLAS / GENERAL LIGHTING CONCEPT DESIGN AND APPLICATION
PROJECT, SPECIAL PRODUCT DESIGN
OZTEK CONSTRUCTION

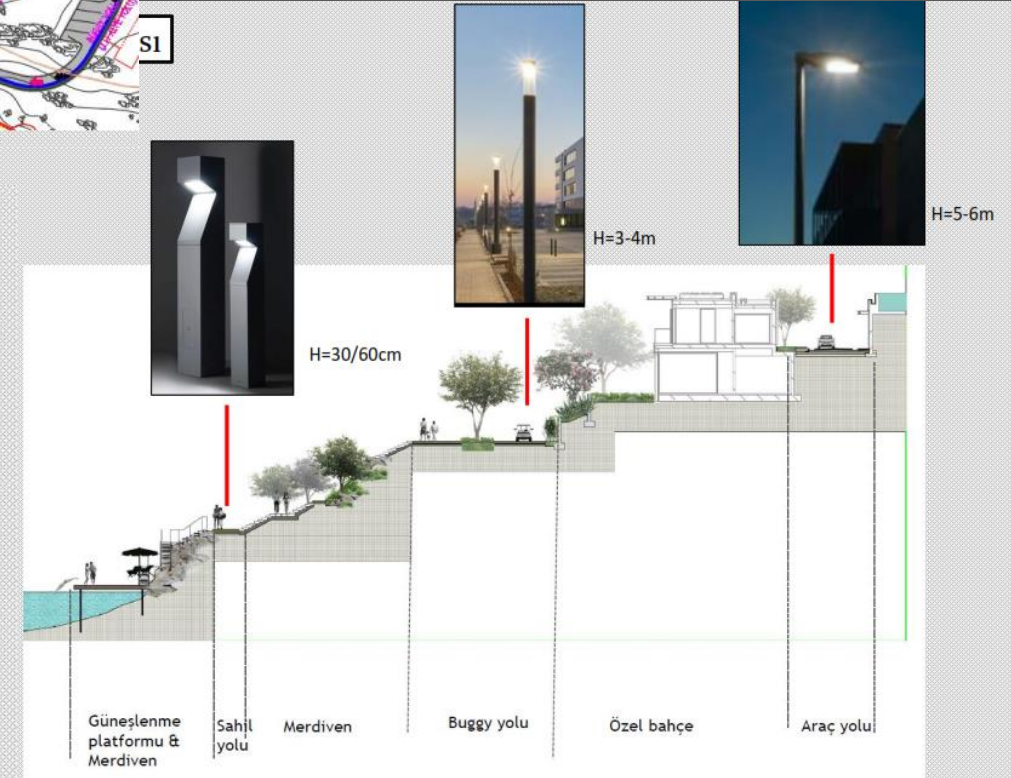
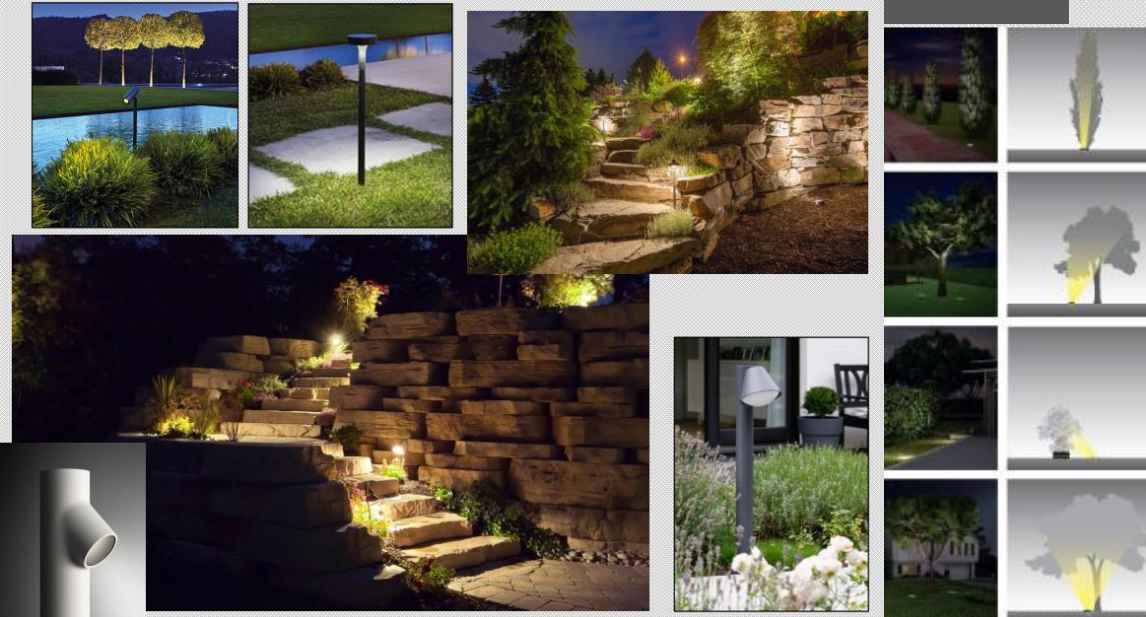


ID BODRUM VILLAS / GENERAL LIGHTING CONCEPT DESIGN AND APPLICATION
PROJECT, SPECIAL PRODUCT DESIGN
OZTEK CONSTRUCTION



ID BODRUM VILLAS / GENERAL LIGHTING CONCEPT DESIGN AND APPLICATION PROJECT, SPECIAL PRODUCT DESIGN OZTEK CONSTRUCTION

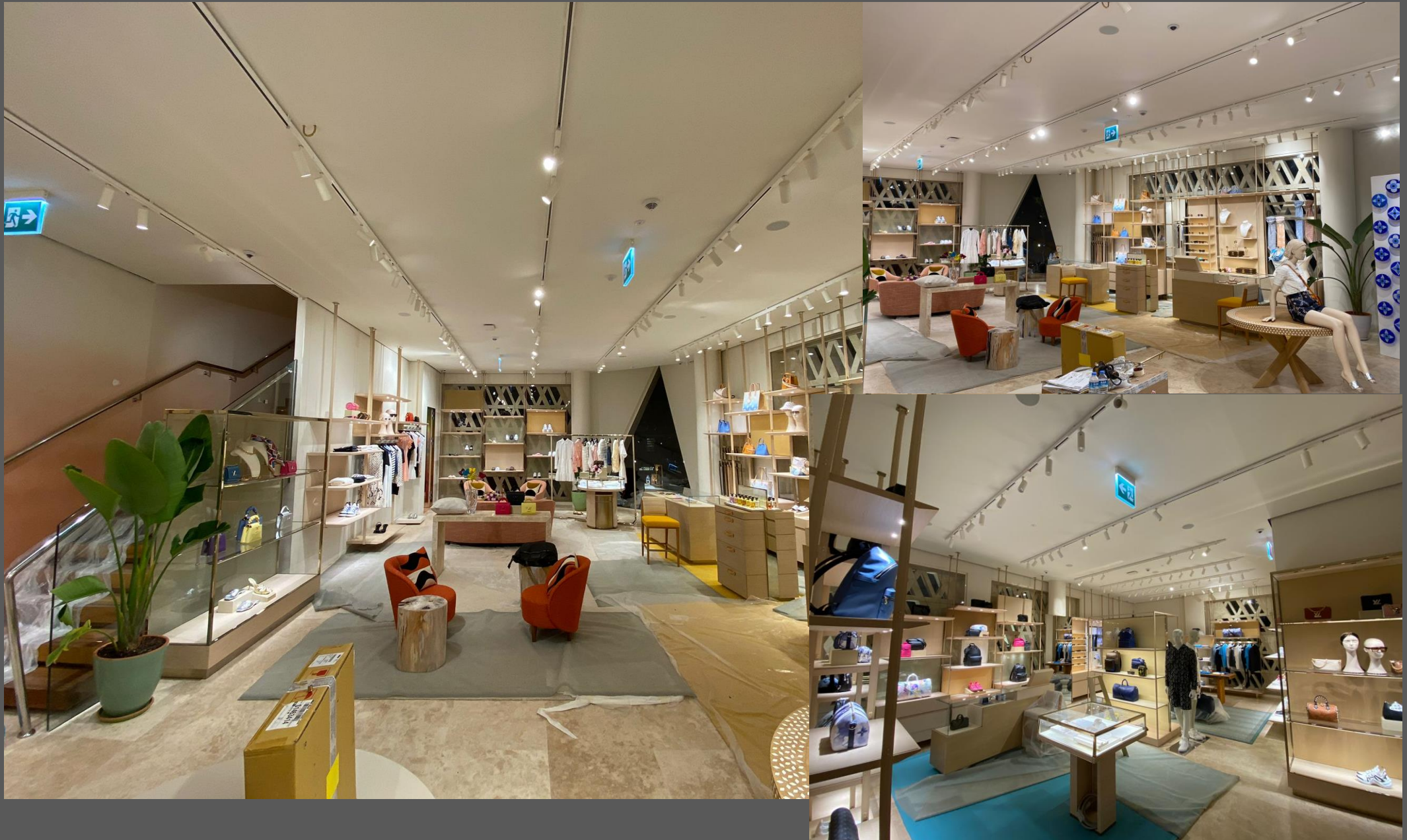
ID Bodrum Peyzaj Aydınlatma Konsepti



LOUISE VUITTON BODRUM / GENERAL LIGHTING AND AUTOMATION CONCEPT /
APPLICATION CONSULTANCY
AREAS



LOUISE VUITTON BODRUM / GENERAL LIGHTING AND AUTOMATION CONCEPT /
APPLICATION CONSULTANCY
AREAS



DAMMAM SHERATON / ALL GUEST ROOM RENOVATION CONCEPT DESIGNS SH – HOTEL GROUP



FEATURES
A SQUARE WHITE LED RECESSED READING LIGHT IS HOUSED WITHIN A CYLINDRICAL HEAD THAT SWIVELS 360° LEFT, RIGHT OR FORWARD AND BACKWARD INTO A 90° RECESSED SQUARE SHADE WHICH CAN BE ADJUSTED OR ADJUSTED FOR THE USER MARKET. THE PRODUCT CAN BE DIMMERED OR SURFACED WITH DIMMER AND FLICKER.

MATERIAL
STEEL AND ALUMINIUM

FINISH
BLACK BRUSHED

CERTIFICATIONS
CE IS Mark + IP20

DIMENSIONS





FEATURES
A RECESSED AND ROTATE FLOOR LAMP FEATURES AN OPTIONAL WARM PINKISH DIMMER WITH CYLINDRICAL OPAL GLASS TOP DIFFUSER. SHADE IS SUSPENDED FROM A METAL ARM WITH SUPPORTED BY AN ADJUSTABLE AND A POSITION METAL ARM. IT HOLDS THE LAMP HEAD. DIMMER IS ON SWIVEL CIRCULAR BASE.

MATERIAL
STEEL AND ALUMINIUM

FINISH
BLACK BRUSHED

RECOMMENDED LAMP
1 x E27 6W LED 2700K

CERTIFICATIONS
CE IS Mark + IP20

DIMENSIONS






FEATURES
THIS TABLE LAMP FEATURES A FULLY ADJUSTABLE SLIDED SLASH METAL SHADE SECURED TO THE ARM WITH A DETAILED BRUSHED BRASS DIMMER. LIGHT BRACKET, DIMMER AND BRUSHED METAL PUSH SWITCH ARE MOUNTED AT THE TOP OF THE SHADE WHICH HELD BUT SECURE HOLES TO REFLECT THE BEST STYLE.

MATERIAL
STEEL

FINISH
BLACK BRUSH WITH BRUSHED BRASS DIMMER AND BRUSHED BRASS HOUSING

RECOMMENDED LAMP
1 x E27 10W LED 2700K

CERTIFICATIONS
CE IS Mark + IP20

DIMENSIONS





FEATURES
THIS TABLE LAMP FEATURES A FULLY ADJUSTABLE SLIDED SLASH METAL SHADE SECURED TO THE ARM WITH A DETAILED BRUSHED BRASS DIMMER. LIGHT BRACKET, DIMMER AND BRUSHED METAL PUSH SWITCH ARE MOUNTED AT THE TOP OF THE SHADE WHICH HELD BUT SECURE HOLES TO REFLECT THE BEST STYLE.

MATERIAL
STEEL

FINISH
BLACK BRUSH WITH BRUSHED BRASS DIMMER AND BRUSHED BRASS HOUSING

RECOMMENDED LAMP
1 x E27 10W LED 2700K

CERTIFICATIONS
CE IS Mark + IP20


DIMENSIONS





**MR2: SUITE BEDROOM
PERSPECTIVE**

03
16-009
SCALE 1:50
DATE



FEATURES
SHADOW DIRECTIONAL HEAD WITH OPAL HOPIUS DIFFUSER HOLDS LAMP WITH EXTENSIBLE LIGHT AND VENTING TOWER DESIGN.

MATERIAL
STEEL WITH HOPIUS DIFFUSER

FINISH
BLACK BRUSH WITH BRUSHED BRASS DIMMER AND HOPIUS DIFFUSER

CERTIFICATIONS
CE IS Mark + IP20

DIMENSIONS





FEATURES
HEAD ADJUSTABLE BASE, DIRECTIONAL HOPIUS DIFFUSER AND DIMMERING BY TIGHTENING LOCKING JOINT. ADJUSTABLE AT THE COLLAR STOP, ADJUSTS UP AND DOWN AND THE CHOPPY HEAD SWIVELS LEFT/RIGHT. SHADE EXTENSIBLE PAINTED WHITE FOR BEST ILLUMINATION.

MATERIAL
STEEL

FINISH
BLACK BRUSH WITH BRUSHED BRASS DIMMER

RECOMMENDED LAMP
1 x E27 10W LED 2700K

CERTIFICATIONS
CE IS Mark + IP20

DIMENSIONS





FEATURES
A SQUARE WHITE LED RECESSED READING LIGHT IS HOUSED WITHIN A CYLINDRICAL HEAD THAT SWIVELS 360° LEFT, RIGHT OR FORWARD AND BACKWARD INTO A 90° RECESSED SQUARE SHADE WHICH CAN BE ADJUSTED OR ADJUSTED FOR THE USER MARKET. THE PRODUCT CAN BE DIMMERED OR SURFACED WITH DIMMER AND FLICKER.

MATERIAL
STEEL AND ALUMINIUM

FINISH
BLACK BRUSHED

CERTIFICATIONS
CE IS Mark + IP20

DIMENSIONS





FEATURES
A RECESSED AND ROTATE FLOOR LAMP FEATURES AN OPTIONAL WARM PINKISH DIMMER WITH CYLINDRICAL OPAL GLASS TOP DIFFUSER. SHADE IS SUSPENDED FROM A METAL ARM WITH SUPPORTED BY AN ADJUSTABLE AND A POSITION METAL ARM. IT HOLDS THE LAMP HEAD. DIMMER IS ON SWIVEL CIRCULAR BASE.

MATERIAL
STEEL AND ALUMINIUM

FINISH
BLACK BRUSHED

RECOMMENDED LAMP
1 x E27 6W LED 2700K

CERTIFICATIONS
CE IS Mark + IP20

DIMENSIONS





FEATURES
THIS TABLE LAMP FEATURES A FULLY ADJUSTABLE SLIDED SLASH METAL SHADE SECURED TO THE ARM WITH A DETAILED BRUSHED BRASS DIMMER. LIGHT BRACKET, DIMMER AND BRUSHED METAL PUSH SWITCH ARE MOUNTED AT THE TOP OF THE SHADE WHICH HELD BUT SECURE HOLES TO REFLECT THE BEST STYLE.

MATERIAL
STEEL

FINISH
BLACK BRUSH WITH BRUSHED BRASS DIMMER AND BRUSHED BRASS HOUSING

RECOMMENDED LAMP
1 x E27 10W LED 2700K

CERTIFICATIONS
CE IS Mark + IP20

DIMENSIONS





SUITE BEDROOM

Email: info@fine-all.com
16 Saberton Close, Redbourn, St. Albans, England

www.fine-all.com
16 Saberton Close, Redbourn, St. Albans, England, AL3 7DS

+44 773 035 2476
+44 530 484 50 80

DAMMAM SHERATON / ALL GUEST ROOM RENOVATION CONCEPT DESIGNS SH – HOTEL GROUP

FEATURES
ALUMI BRASSER FROSTED LIGHT WHICH HAS A CIRCULAR HEAD WITH A BLACK DIMMER SWITCH PLUG ARM IS ADJUSTABLE. DIMMER SWITCH HAS TAPPED FOR FUNCTION AND DIMMABLE DIMMER SWITCHES IN THE BACKSIDE ARE AVAILABLE IN 300V.

MATERIAL
STEEL

FINISH
BLACK BRUSHED BRASS

RECOMMENDED LAMP
1X E27 20-25W LED

CERTIFICATIONS
CE IS 90 + IP20

DIMENSIONS
L: 180
H: 180

FEATURES
A REFINED AND MODERN FLOOR LAMP WITH A STEEL AND FABRIC SHADE WITH STEEL AND FABRIC TOP SUPPLIER. DIMMER IS SUPPLIED FROM A METAL ROD WHICH SUPPORTED BY AN ALUMI BRASSER AND A JUNCTION BOX WHICH FITS THE LIGHT COLOUR. SHADE IS A BRUSHED STEEL AND FABRIC.

MATERIAL
STEEL AND FABRIC

FINISH
BLACK BRUSHED BRASS

RECOMMENDED LAMP
1X E27 20-25W LED

CERTIFICATIONS
CE IS 90 + IP20

DIMENSIONS
L: 180
H: 180

FEATURES
A REFINED AND MODERN FLOOR LAMP WITH A STEEL AND FABRIC SHADE WITH STEEL AND FABRIC TOP SUPPLIER. DIMMER IS SUPPLIED FROM A METAL ROD WHICH SUPPORTED BY AN ALUMI BRASSER AND A JUNCTION BOX WHICH FITS THE LIGHT COLOUR. SHADE IS A BRUSHED STEEL AND FABRIC.

MATERIAL
STEEL AND FABRIC

FINISH
BLACK BRUSHED BRASS

RECOMMENDED LAMP
1X E27 20-25W LED

CERTIFICATIONS
CE IS 90 + IP20

DIMENSIONS
L: 180
H: 180

FEATURES
A REFINED AND MODERN FLOOR LAMP WITH A STEEL AND FABRIC SHADE WITH STEEL AND FABRIC TOP SUPPLIER. DIMMER IS SUPPLIED FROM A METAL ROD WHICH SUPPORTED BY AN ALUMI BRASSER AND A JUNCTION BOX WHICH FITS THE LIGHT COLOUR. SHADE IS A BRUSHED STEEL AND FABRIC.

MATERIAL
STEEL AND FABRIC

FINISH
BLACK BRUSHED BRASS

RECOMMENDED LAMP
1X E27 20-25W LED

CERTIFICATIONS
CE IS 90 + IP20

DIMENSIONS
L: 180
H: 180

FEATURES
THIS TABLE LAMP IS COME IN FULLY ADJUSTABLE BLACK BLIND HEAD. SHADE IS SECURE TO THE ARM WITH A DETAILED BRUSHED BRASS BALLS JOINT BRACKET. THERE IS A BRUSHED BRASS WITH PLUG SWITCH WHICH IS INTO THE TOP OF THE SHADE WHICH HAS HEAT RESISTANT HOLES TO REFLECT THE BRIGHT STYLE.

MATERIAL
STEEL

FINISH
BLACK BRUSH WITH BRASS BRUSH AND BRUSHED BRASS HEAD (P)

RECOMMENDED LAMP
1X E27 20-25W LED

CERTIFICATIONS
CE IS 90 + IP20

DIMENSIONS
L: 180
H: 180

FEATURES
A REFINED AND MODERN FLOOR LAMP WITH A STEEL AND FABRIC SHADE WITH STEEL AND FABRIC TOP SUPPLIER. DIMMER IS SUPPLIED FROM A METAL ROD WHICH SUPPORTED BY AN ALUMI BRASSER AND A JUNCTION BOX WHICH FITS THE LIGHT COLOUR. SHADE IS A BRUSHED STEEL AND FABRIC.

MATERIAL
STEEL AND FABRIC

FINISH
BLACK BRUSH WITH BRASS BRUSH AND BRUSHED BRASS HEAD (P)

RECOMMENDED LAMP
1X E27 20-25W LED

CERTIFICATIONS
CE IS 90 + IP20

DIMENSIONS
L: 180
H: 180

FEATURES
THIS A STEPPED-BLUE DIMMY ADJUSTABLE DIRECTIONAL HEAD AND ORIGINALLY KEY TAPPED LAMPING JOINT. JOINT IS POSITIONED AT THE COLLAR STEP. JOINT IS ADJUSTABLE AND DIRECTIONAL. THE DIMMY HEAD DIMMY ADJUSTABLE DIRECTIONAL IS FINISHED WHITE FOR EXTRA ILLUMINATION.

MATERIAL
STEEL


FINISH
BLACK BRUSH WITH BRASS BRUSH AND BRUSHED BRASS HEAD (P)

RECOMMENDED LAMP
1X E27 20-25W LED

CERTIFICATIONS
CE IS 90 + IP20

DIMENSIONS
L: 180
H: 180

01
KING & TWIN BEDROOM
PERSPECTIVE



KING TWIN BED ROOM

Email: info@fine-all.com
16 Saberton Close, Redbourn, St. Albans, England

www.fine-all.com
16 Saberton Close, Redbourn, St. Albans, England, AL3 7DS

+44 773 035 24 78
+44 202 484 95 60

FEATURES
DIMMER IS SUPPLIED WITH AN INTERNAL TOP PLACEMENT. DIMMER IS SUPPLIED FROM A METAL ROD WHICH SUPPORTED BY AN ALUMI BRASSER AND A JUNCTION BOX WHICH FITS THE LIGHT COLOUR. SHADE IS A BRUSHED STEEL AND FABRIC.

MATERIAL
STEEL

FINISH
BLACK BRUSH WITH BRASS BRUSH AND BRUSHED BRASS HEAD (P)

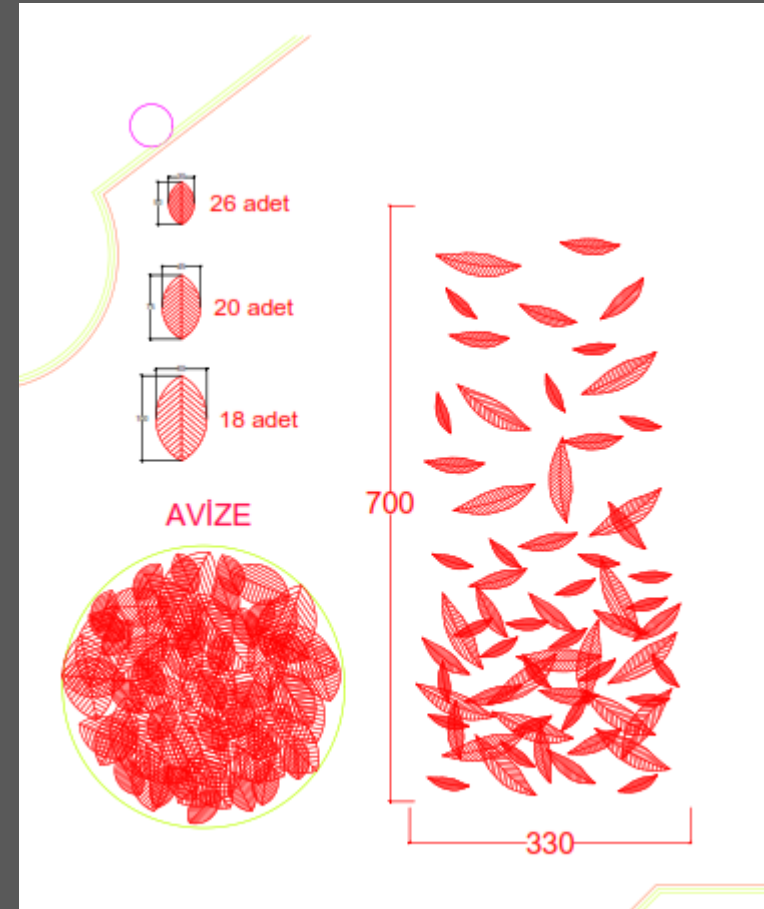
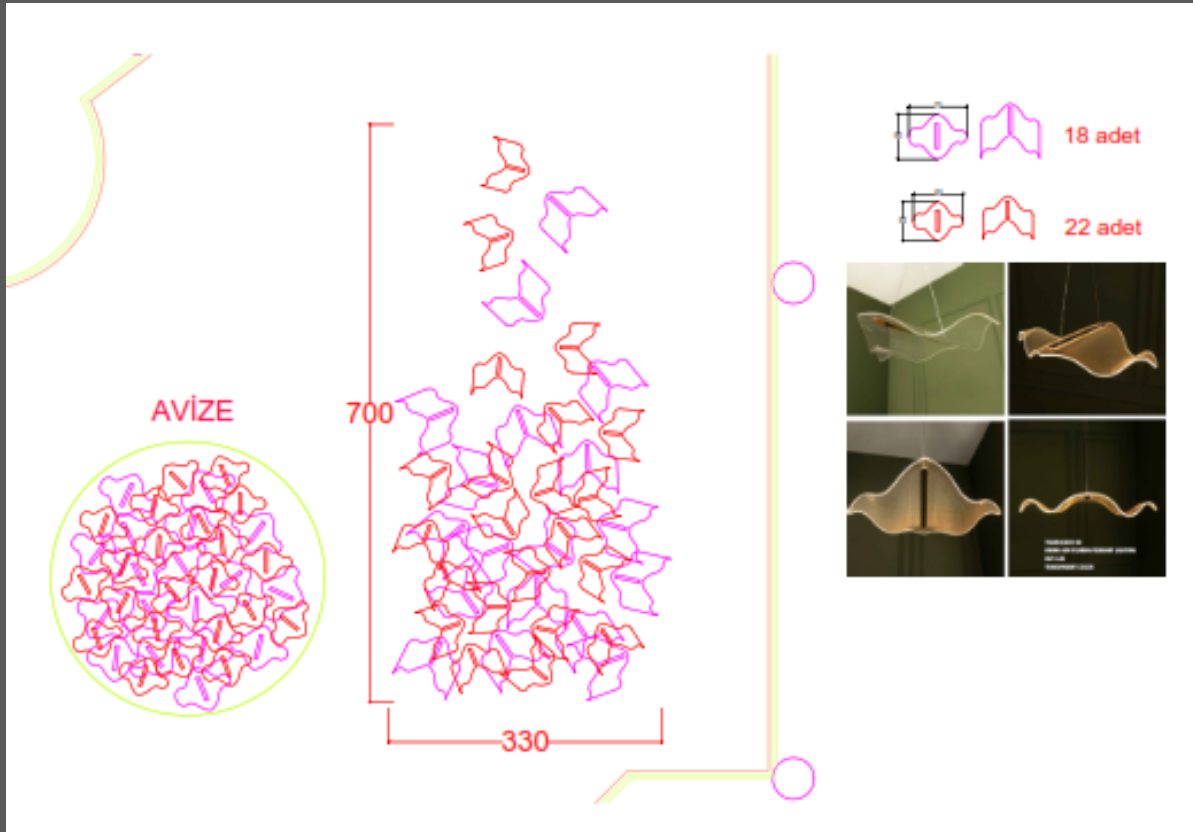
RECOMMENDED LAMP
1X E27 20-25W LED

CERTIFICATIONS
CE IS 90 + IP20

DIMENSIONS
L: 180
H: 180

TPAO HEADQUARTERS / ATRIUM DECORATIVE PENDANT LIGHTING DESIGN
ARCH





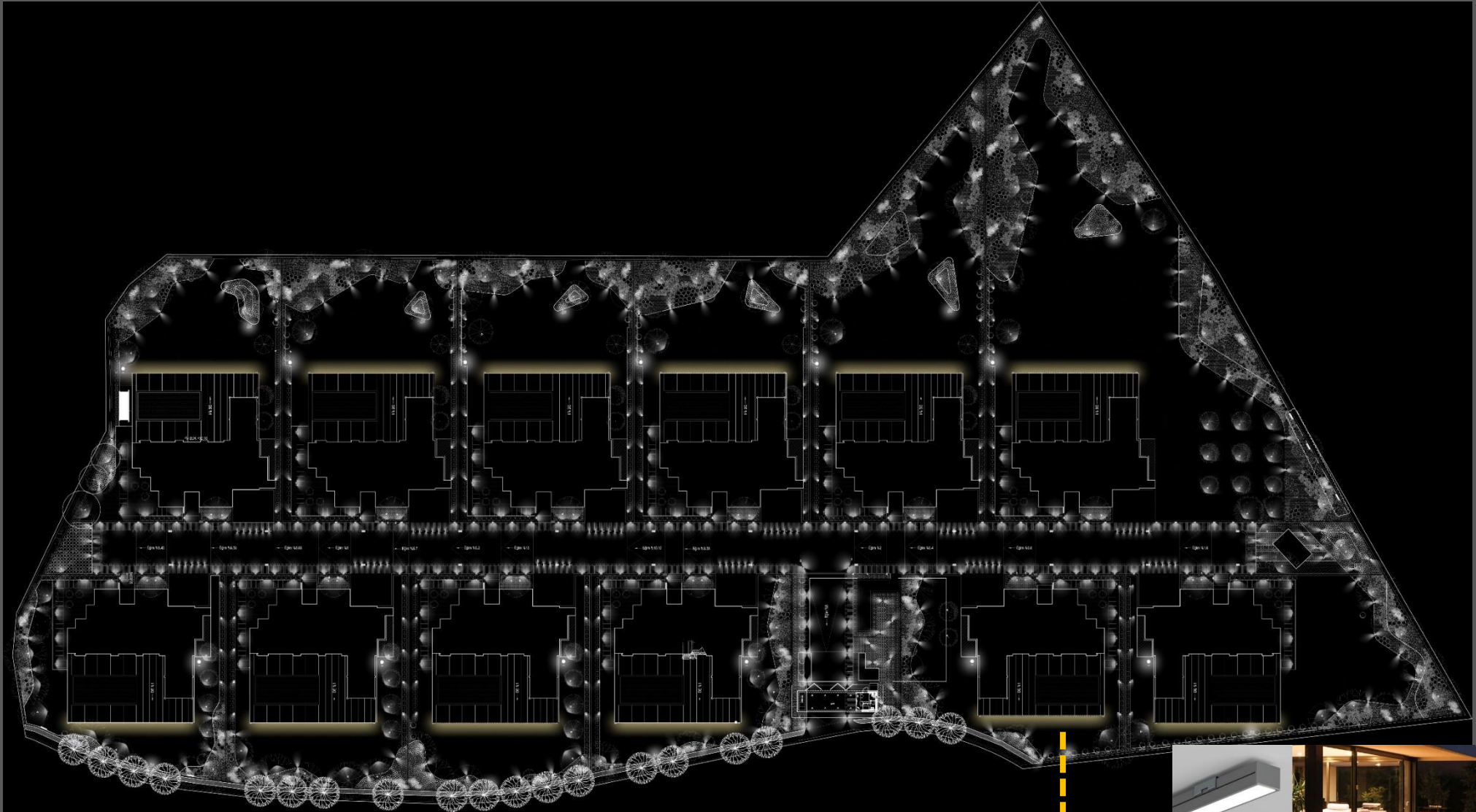
DEMIRCIKOY VILLAS PROJECT / GENERAL LIGHTING CONCEPT AND PROJECT MGM



DEMIRCIKOY VILLAS PROJECT / GENERAL LIGHTING CONCEPT AND PROJECT MGM

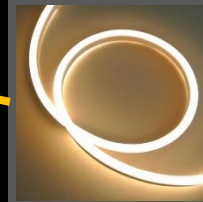
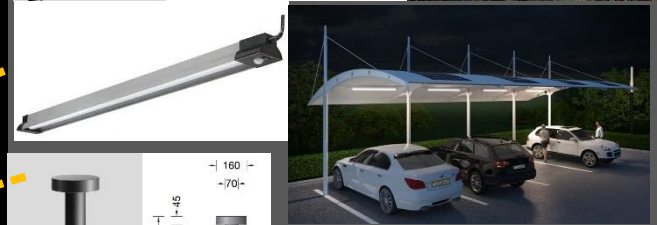
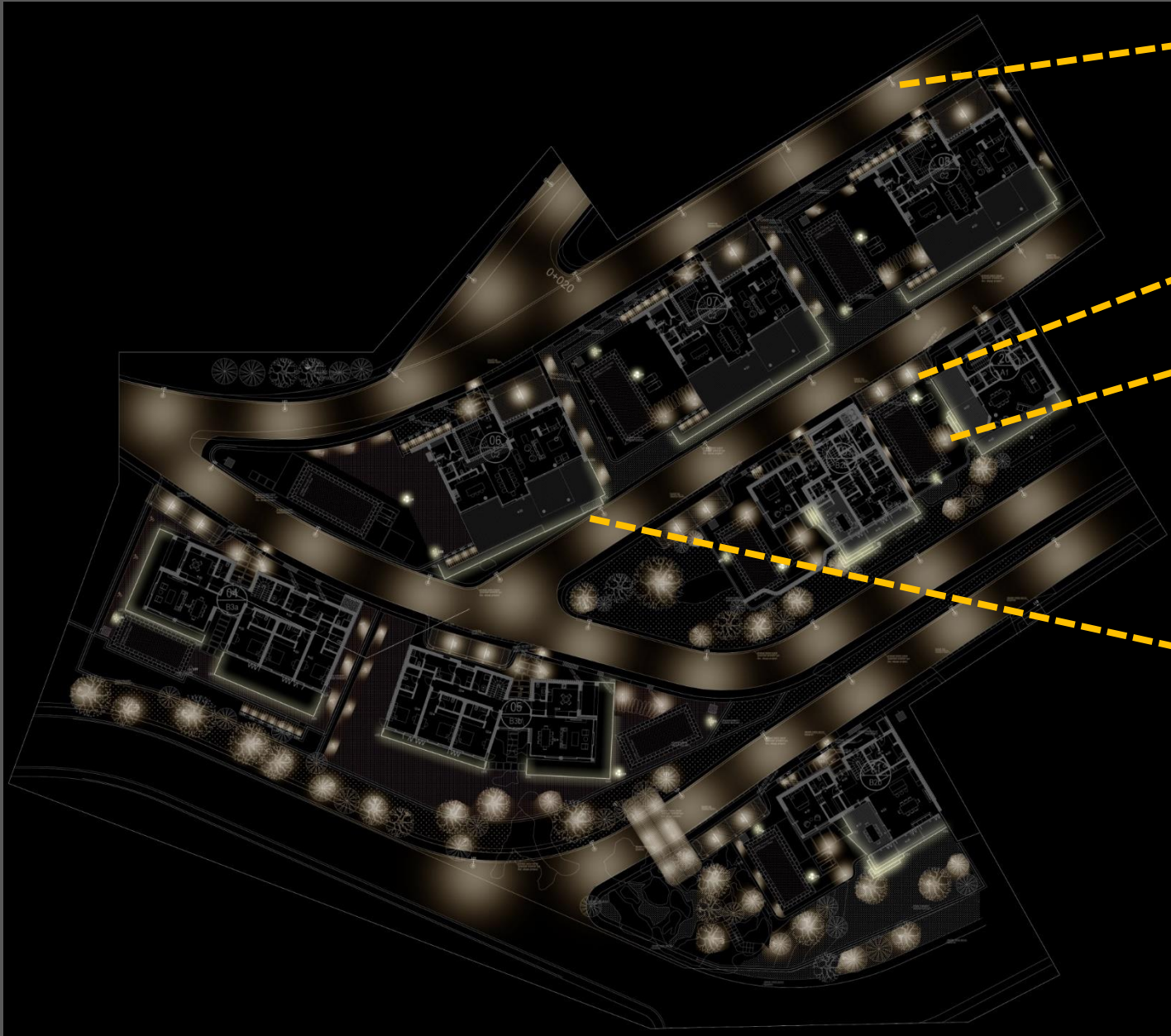


DEMIRCIKOY VILLAS PROJECT / GENERAL LIGHTING CONCEPT AND PROJECT MGM

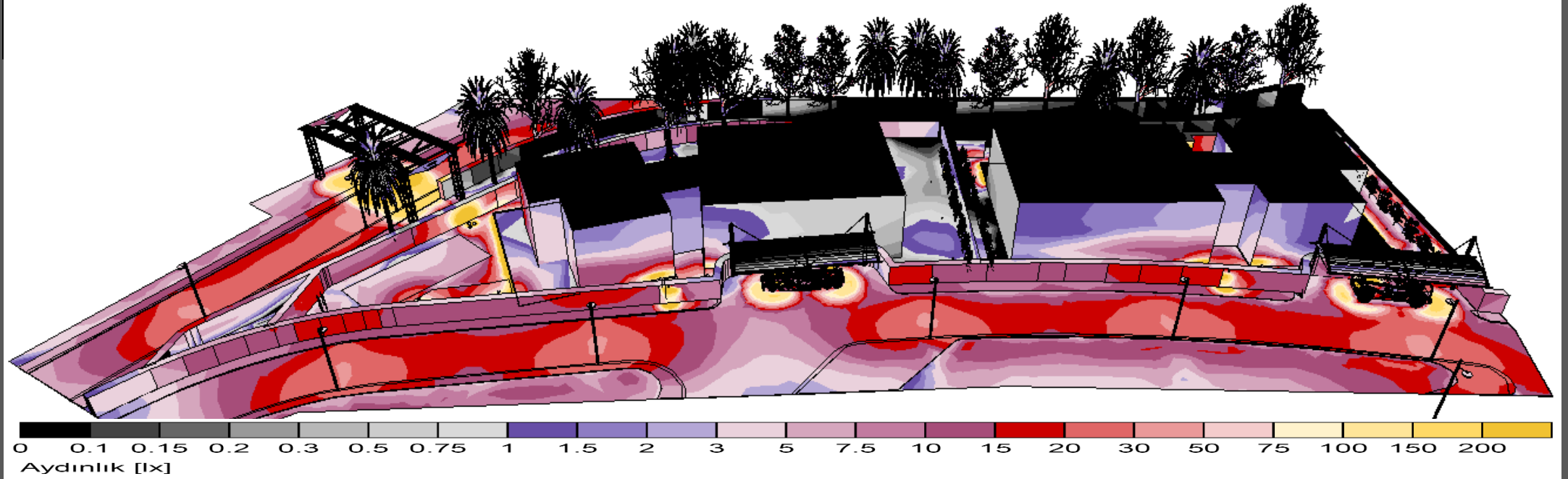


GOKCEBEL BODRUM PRIVATE HOUSES PROJECT / LANDSCAPE LIGHTING CONCEPT

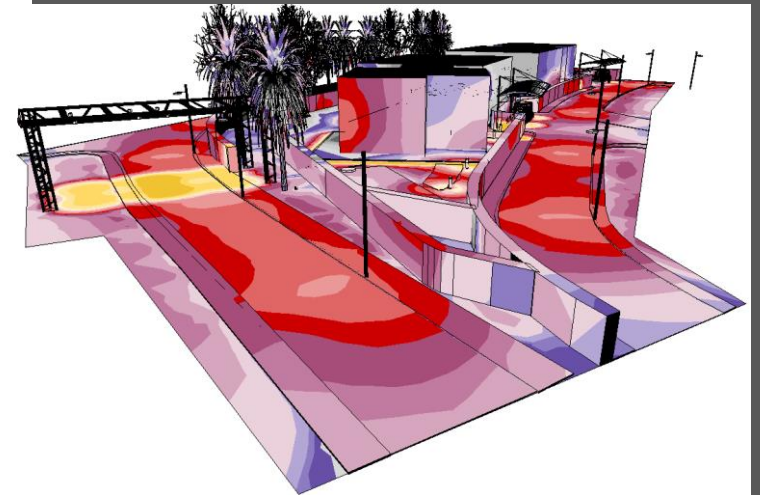
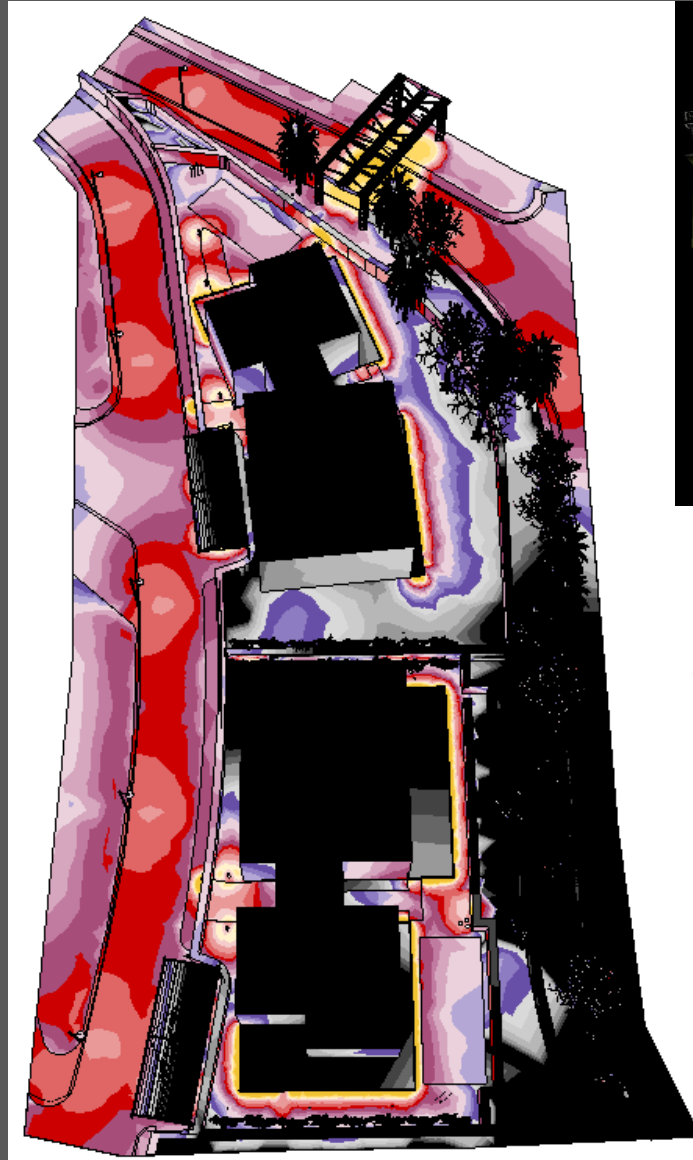
ARCH SEDA UNAY / MINIMISIMO



GOKCEBEL BODRUM PRIVATE HOUSES PROJECT / LANDSCAPE LIGHTING
CONCEPT
ARCH SEDA UNAY / MINIMISIMO



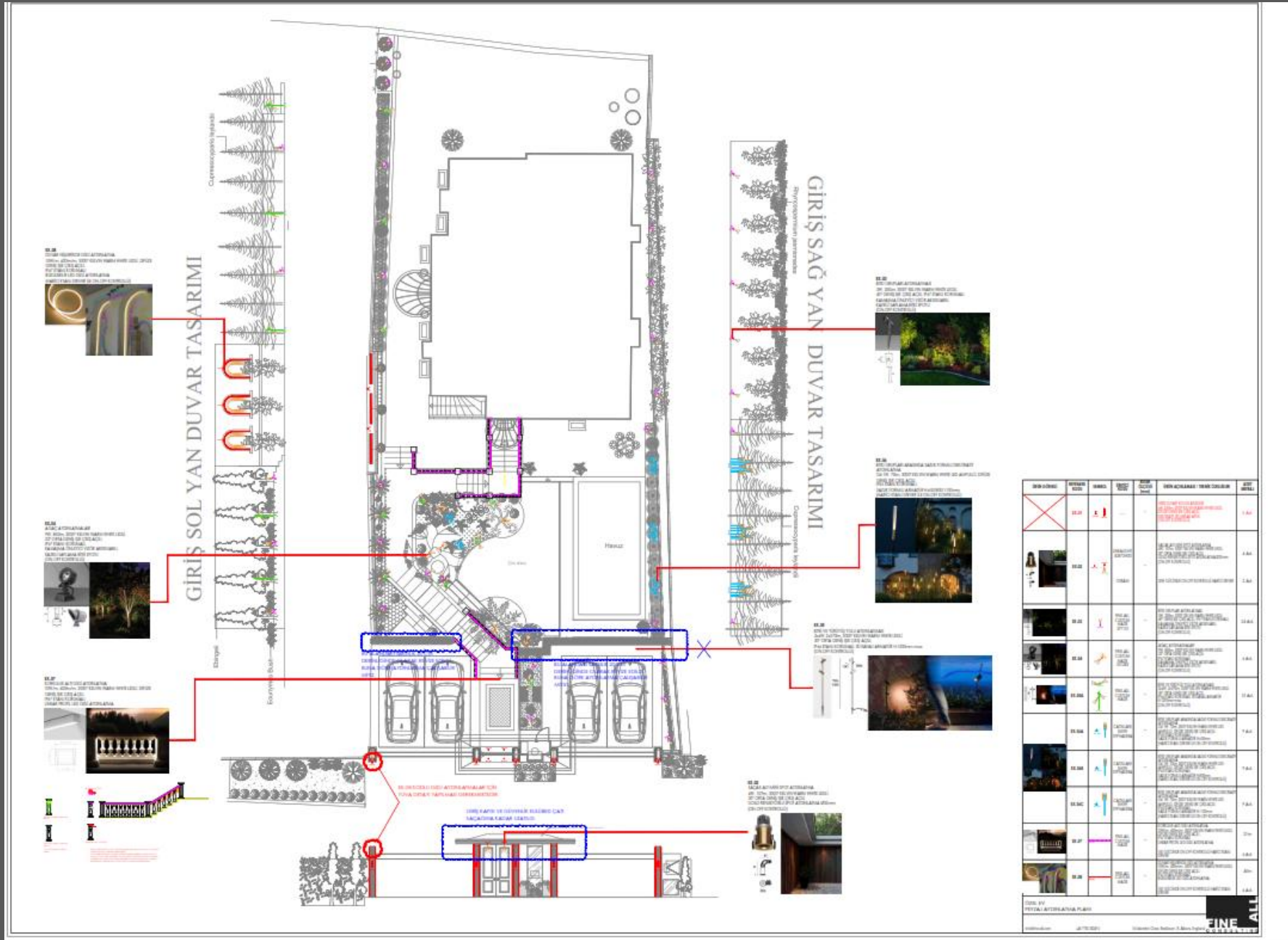
GOKCEBEL BODRUM PRIVATE HOUSES PROJECT / LANDSCAPE LIGHTING
CONCEPT
ARCH SEDA UNAY / MINIMISIMO



KUZGUNCUK PRIVATE HOUSE / GENERAL LIGHTING CONCEPT AND PROJECT
ARCHIMATE



KUZGUNCUK PRIVATE HOUSE / GENERAL LIGHTING CONCEPT AND PROJECT ARCHIMATE



LA PIOLA ITALYAN RESTAURANT PASTA&PIZZA / WIMBLEDON





THANK YOU VERY MUCH...

Raif Kural
Director
FINEALL CONSULTING LTD